

## MARKET NEWS

Indeks pada perdagangan kemarin menguat +84.85 poin ditutup pada level 6093.55 dengan nilai transaksi di pasar reguler mencapai Rp12.9 triliun. Menguatnya indeks karena aksi beli yang dilakukan investor pada saham-saham unggulan yang beberapa hari lalu mengalami tekanan jual yang signifikan. Aksi beli dipicu oleh sentimen positif menguatnya indeks global dalam 2 hari perdagangan terakhir dan cenderung menguatnya indeks Dow Futures. Selain itu, kekhawatiran investor terhadap meluasnya pandemi Covid-19 juga mereda sehingga turut memberikan dukungan terhadap sentimen pasar. Statistik perdagangan menunjukkan mayoritas saham menguat dimana sebanyak 292 saham mengalami kenaikan harga dan 199 saham masih melemah. Pola pergerakan indeks yang masih bergerak dibawah resistance level 6200 menunjukkan indeks masih berada dalam fase konsolidasi sehingga pergerakan saham-saham masih mixed dan berfluktuasi.

Indeks Dow Jones dan Nasdaq pada perdagangan semalam ditutup menguat masing-masing +0.68% dan +0.74% seiring respon positif investor menyusul Presiden Trump menandatangani paket stimulus fiskal AS yang baru senilai US\$900 miliar menjadi undang-undang. Menguatnya indeks global dimotori oleh menguatnya saham sektor teknologi, consumer, dan jasa telekomunikasi. Menguatnya indeks global diperkirakan dapat memberikan sedikit sentimen positif terhadap pasar BEI hari ini. Pergerakan saham-saham diperkirakan masih cenderung mixed sehingga investor sebaiknya tetap selektif dalam melakukan transaksi terutama pada saham-saham yang likuiditas perdagangannya tinggi, fundamental solid, dan memiliki berita positif.

Aspek teknikal, indeks pada perdagangan hari ini diperkirakan masih berpotensi untuk melanjutkan penguatannya setelah pada perdagangan kemarin ditutup positif. Range pergerakan indeks untuk hari ini diperkirakan akan berada di kisaran 5975-6235.

## WHAT'S IN THE PACK

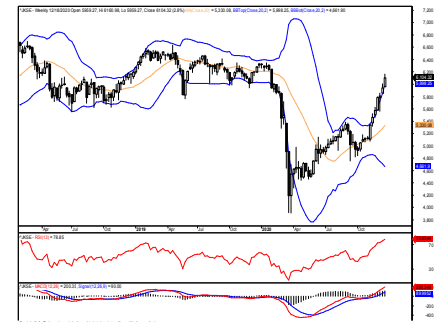
### EXCL – BUY

Harga diperkirakan berpotensi untuk menguji level tertinggi minggu lalu di Rp2,980. Aksi beli dapat dilakukan di level Rp2,800 dengan target keuntungan di level Rp2,980.

### UNTR – BUY

Harga ditutup menguat dan mengalami *rebound intraday*. Aksi beli dapat dilakukan di level Rp26,900 dengan target keuntungan di level Rp28,500.

## PRICE CHART



## KEY INDICES

	Prev Close	Chg (%)	YTD (%)
MSCI Indonesia	6,734.1	121.9	1.8
MSCI Asia-Ex Japan	815.0	(1.1)	(0.1)
KLCI	1,643.9	2.7	0.2
FSSTI	2,840.1	(1.9)	(0.1)
SET	1,452.7	(33.6)	(2.3)
Hang Seng	26,314.6	(71.9)	(0.3)
Nikkei	26,854.0	197.4	0.7
Shanghai Comp	3,397.3	0.7	0.0
Dow Jones	30,404.0	204.1	0.7

Source: Bloomberg

## TOP VOLUME

Stock	Price (Rp)	Chg (%)	Vol ('000)
Aneka Tambang	2,000	11.7	992,175
Bank Rakyat Indo Agroniaga	1,035	7.3	697,862
Smartfren Telecom	71	1.4	618,117
Metro Healthcare	322	1.9	436,856
Bank Bukopin	610	(3.9)	407,691

## TOP GAINERS

Stock	Price (Rp)	Chg (%)	Vol ('000)
Bank Maybank	396	24.5	333,594
Maha Properti	1,740	16.0	3
Sumber Alfaria	860	12.4	25,772
Aneka Tambang	2,000	11.7	992,175
Bank CIMB Niaga	1,085	8.0	34,798

## TOP LOSERS

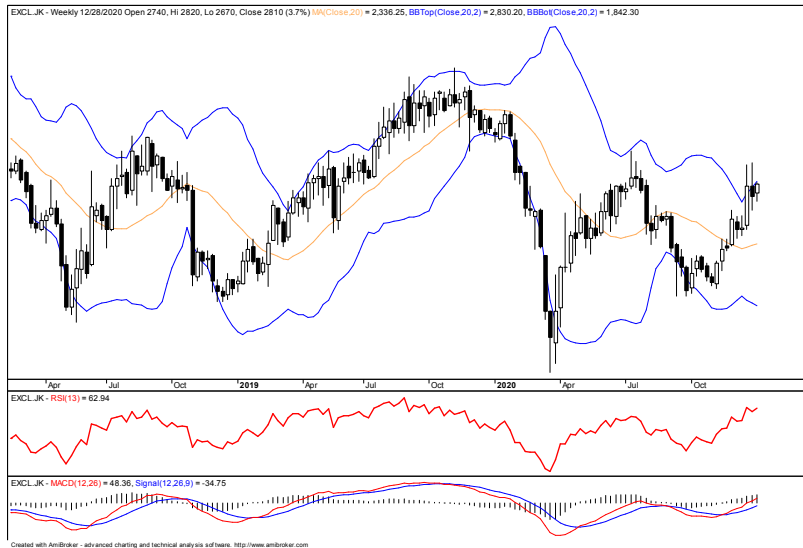
Stock	Price (Rp)	Chg (%)	Vol ('000)
Bayan Resources	14,450	(6.8)	81
Inti Bangun Sejahtera	7,750	(6.6)	0.4
Bank Bukopin	610	(3.9)	407,691
Semen Baturaja	1,085	(3.6)	52,551
Bank Permata	3,140	(2.5)	4,679

## COMMODITY TREND

	Closing	Chg (%)
Crude Oil NYMEX (US\$/bbl)	47.62	(1.3)
Coal Fut Newc (US\$/tonne)	85.35	1.0
Nickel 3M LME	16,993	0.0
Tin 3M LME	20,185	0.0
Gold SPOT (US\$/oz)	1,879	(0.2)
CPO Fut Msia (MYR/tonne)	3,834	(0.5)

Source: Bloomberg

## TRADERS' CORNER



### XL Axiata (EXCL IJ)

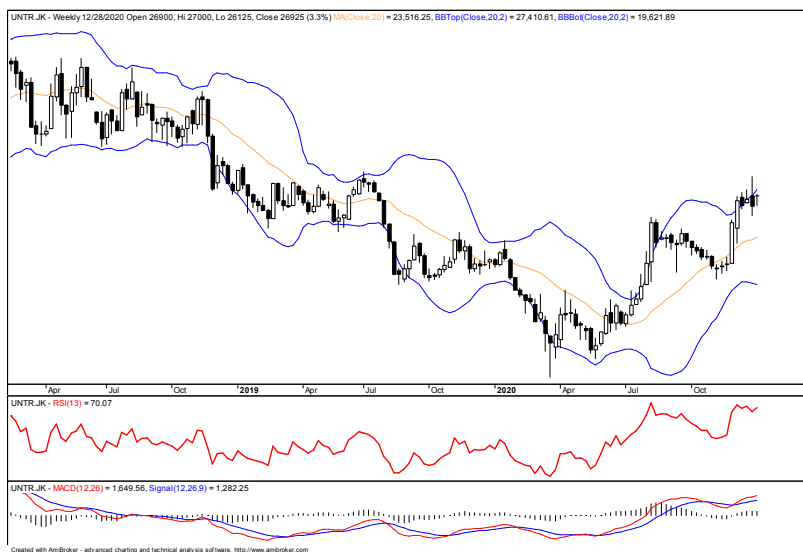
Technical buy with 6% potential return

Resistance : Rp2,980 & Rp3,070

Support : Rp2,600 & Rp2,400

Stop Loss : Rp2,650

Harga saham EXCL pada perdagangan kemarin ditutup menguat dan kembali mengalami rebound. Harga diperkirakan berpotensi untuk menguji level tertinggi minggu lalu di Rp2,980. Pergerakan teknikal indikator RSI juga bullish dan masih bergerak diatas level tengahnya. Sementara itu MACD masih bergerak dalam signal *bullish cross*. Aksi beli dapat dilakukan di level Rp2,800 dengan target keuntungan di level Rp2,980.



### United Tractors (UNTR IJ)

Technical buy with 6% potential return

Resistance : Rp28,500 & Rp31,000

Support : Rp26,100 & Rp25,250

Stop Loss : Rp26,000

Harga saham UNTR pada perdagangan kemarin ditutup menguat dan mengalami *rebound intraday*. Harga sempat melemah ke level terendahnya di Rp26,125 namun berbalik arah sehingga rebound lanjutan diperkirakan masih akan terjadi. Pergerakan teknikal indikator RSI juga bergerak ke atas dan masih berada diatas level tengahnya. Aksi beli dapat dilakukan di level Rp26,900 dengan target keuntungan di level Rp28,500.

**CORPORATE NEWS**

**Trimuda Nuansa Citra (TNCA):** Perseroan berencana akan melakukan *rights issue* dengan target dana lebih dari Rp200 miliar. Perseroan akan merilis prospektus awal *rights issue* pada tahun depan dan ditargetkan terlaksana pada pertengahan tahun 2021. (Kontan)

**Steadfast Marine (KPAL):** Perseroan menargetkan pendapatan tahun 2021 akan mencapai Rp150 miliar hingga Rp200 miliar. Sementara itu, perseroan memperkirakan pendapatan tahun ini akan mencapai Rp35 miliar hingga Rp37 miliar atau turun 73.78% - 75.20% dibanding realisasi pendapatan tahun 2019 yang mencapai Rp141.16 miliar. Hal ini terjadi karena perseroan hanya mengandalkan pendapatan dari jasa perbaikan kapal atau *docking* seiring tidak adanya pesanan pembangunan kapal baru. (Kontan)

**Mitra Pinasthika Mustika (MPMX):** Perseroan menargetkan pertumbuhan pendapatan sebesar 10%-15% dengan perolehan *bottom line* yang positif pada tahun 2021. Namun demikian perseroan masih memperkirakan iklim bisnis masih dibayangi oleh pandemi covid-19 yang belum berakhir. (Kontan)

**Waskita Karya (WSKT):** Perseroan kembali akan menawarkan 11 ruas tol miliknya kepada investor strategis termasuk kepada Lembaga Pengelola Investasi (LPI). Nilai divestasi 11 ruas tol tersebut ditargetkan mencapai Rp31 triliun. (Investor Daily)

**Indosat (ISAT):** Ooredoo QPSC menandatangani nota kesepahaman eksklusif dan tidak mengikat dengan CK Hutchison Holding terkait potensi merger antara Perseroan dengan PT Hutchison 3 Indonesia. Periode nota kesepahaman tersebut berlaku hingga 30 April 2021. (Investor Daily)

**Krakatau Steel (KRAS):** Perseroan akan menerbitkan obligasi wajib konversi (OWK) tahap pertama senilai Rp2.2 triliun pada Desember 2020. OWK tersebut diterbitkan dalam rangka pencairan dana Pemulihan Ekonomi Nasional sebesar Rp3 triliun. Sisanya sebesar Rp800 miliar akan diterbitkan pada Desember 2021. (Investor Daily)

**Mayora Indah (MYOR):** Perseroan mengalokasikan belanja modal 2021 sebesar Rp600 miliar – Rp1 triliun. Dana belanja modal akan diperoleh dari kas internal Perseroan dan pinjaman. Belanja modal akan digunakan untuk mendukung tercapainya target pertumbuhan pendapatan 2021 sebesar 10% yoy menjadi Rp26.62 triliun vs estimasi 2020 sebesar Rp24.2 triliun. Pada tahun depan Perseroan akan merilis 10 produk baru yang diharapkan dapat meningkatkan kontribusi terhadap pendapatan 2021. (Investor Daily)

**Inti Bangun Sejahtera (IBST):** Perseroan menganggarkan belanja modal 2021 sebesar Rp1 triliun. Dana belanja modal akan diperoleh dari kas internal Perseroan dan eksternal seperti pinjaman bank. Dana belanja modal akan digunakan untuk pembangunan dan pembelian menara telekomunikasi serta *fiber optic*. Selain itu, Perseroan pada tahun depan akan melakukan monetisasi aset dan infrastruktur yang telah dimiliki untuk meningkatkan nilai tambah bagi Perseroan dan pemegang saham. (Investor Daily)

## Waran

No.	KODE	DESKRIPSI	EXE Price	Maturity
1	ASPI-W	WARAN SERI I ANDALAN SAKTI PRIMAINDO Tbk	130	16-Feb-23
2	AYLS-W	WARAN SERI I AGRO YASA LESTARI Tbk	150	11-Feb-21
3	BABP-W3	WARAN SERI IV BANK MNC INTERNASIONAL Tbk	100	20-Jun-23
4	BABP-W4	WARAN SERI V BANK MNC INTERNASIONAL Tbk	50	2-Dec-22
5	BACA-W2	WARAN SERI III BANK CAPITAL INDONESIA Tbk	102	1-Dec-22
6	BAPI-W	WARAN SERI I BHAKTI AGUNG PROPERTINDO Tbk	155	16-Sep-22
7	BSSS-W	WARAN SERI I BUMI BENOWO SUKSES SEJAHTERA Tbk	200	15-Apr-21
8	BEEF-W	WARAN SERI I ESTIKA TATA TIARA Tbk	550	8-Jan-21
9	BESS-W	WARAN SERI I BATULICIN NUSANTARA MARITIM Tbk	126	9-Mar-23
10	BIPI-W	WARAN SERI II ASTRINDO NUSANTARA INFRASTRUKTUR Tbk	125	8-Jul-22
11	BRPT-W	WARAN SERI I BARITO PACIFIC Tbk	466	3-Jun-21
12	BSIM-W3	WARAN SERI III BANK SINARMAS Tbk	625	12-May-21
13	BULL-W2	WARAN SERI IV BUANA LINTAS LAUTAN Tbk	220	30-Jun-22
14	CAKK-W	WARAN SERI I CAHAYAPUTRA ASA KERAMIK Tbk	188	30-Oct-20
15	CASA-W	WARAN SERI I CAPITAL FINANCIAL INDONESIA Tbk	135	19-Jul-21
16	CASH-W	WARAN SERI I CASHLEZ WORLDWIDE INDONESIA Tbk	500	3-May-21
17	CITY-W	WARAN SERI I NATURA CITY DEVELOPMENTS Tbk	150	27-Sep-21
18	COCO-W	WARAN SERI I WAHANA INTERFOOD NUSANTARA Tbk	400	18-Mar-22
19	CPRI-W	WARAN SERI I CAPRI NUSA SATU PROPERTI Tbk	150	11-Apr-22
20	DADA-W	WARAN SERI I DIAMOND CITRA PROPERTINDO Tbk	127	14-Feb-23
21	DEAL-W	WARAN SERI I DEWATA FREIGHTINTERNATIONAL Tbk	187	8-Nov-21
22	DFAM-W	WARAN SERI I DAFAM PROPERTY INDONESIA Tbk	143	26-Apr-21
23	DWGL-W	WARAN SERI I DWI GUNA LAKSANA Tbk	187	12-Dec-22
24	EAST-W	WARAN SERI I EASTPARC HOTEL Tbk	190	8-Jul-22
25	ESIP-W	WARAN SERI I SINERGI INTI PLASTINDO Tbk	240	12-Nov-21
26	FITT-W	WARAN SERI I HOTEL FITRA INTERNATIONAL Tbk	138	10-Jun-22
27	FREN-W	WARAN SERI II SMARTFREN TELECOM Tbk	100	22-Nov-21
28	HELI-W	WARAN SERI I JAYA TRISHINDO Tbk	400	27-Mar-21
29	HOKI-W	WARAN SERI I BUYUNG POETRA SEMBADA Tbk	355	22-Dec-20
30	IBFN-W	WARAN SERI I INTAN BARUPRANA FINANCE Tbk	475	11-Oct-21
31	INDO-W	WARAN SERI I ROYALINDO INVESTA WIJAYA Tbk	110	13-Jan-25
32	INPC-W	WARAN SERI I BANK ARTHA GRAHA INTERNASIONAL Tbk	111	7-Dec-21
33	IPTV-W	WARAN SERI I MNC VISION NETWORKS Tbk	288	8-Jul-21
34	ITMA-W	WARAN SERI I SUMBER ENERGI ANDALAN Tbk	800	12-Oct-22
35	JAYA-W	WARAN SERI I ARMADA BERJAYA TRANS Tbk	680	19-Feb-21
36	KBAG-W	WARAN SERI I KARYA BERSAMA ANUGERAH Tbk	125	6-Apr-23
37	KIOS-W	WARAN SERI I KIOSON KOMERSIAL INDONESIA Tbk	375	2-Oct-20
38	KOTA-W	WARAN SERI I DMS PROPERTINDO Tbk	250	8-Jul-22
39	KPAS-W	WARAN SERI I COTTONINDO ARIESTA Tbk	260	1-Oct-21
40	MAMI-W	WARAN SERI I MAS MURNI INDONESIA Tbk	130	17-Jun-22
41	MEDC-W	WARAN SERI I MEDCO ENERGI INTERNASIONAL Tbk	675	11-Dec-20
42	NASA-W	WARAN SERI I AYANA LAND INTERNATIONAL Tbk	105	7-Aug-20
43	NATO-W	WARAN SERI I NUSANTARA PROPERTI INTERNASIONAL Tbk	108	18-Jan-22
44	NUSA-W	WARAN SERI I SINERGI MEGAH INTERNUSA Tbk	160	10-Jul-20
45	NZIA-W	WARAN SERI I NUSANTARA ALMAZIA Tbk	680	23-Sep-20
46	POLA-W	WARAN SERI I POOL ADVISTA FINANCE Tbk	168	16-Nov-23
47	POSA-W	WARAN SERI I BLISS PROPERTI INDONESIA Tbk	155	10-May-21
48	PRIM-W	WARAN SERI I ROYAL PRIMA Tbk	625	14-May-21
49	PURA-W	WARAN SERI I PUTRA RAJAWALI KENCANA Tbk	106	26-Jan-23
50	PURE-W	WARAN SERI I TRINITAN METALS AND MINERALS Tbk	360	9-Apr-21
51	REAL-W	WARAN SERI I REPOWER ASIA INDONESIA Tbk	105	4-Dec-20
52	SBAT-W	WARAN SERI I SEJAHTERA BINTANG ABADI TEXTILE Tbk	120	7-Apr-23
53	SINI-W	WARAN SERI I SINGARAJA PUTRA Tbk	115	7-Nov-22
54	SMKL-W	WARAN SERI I SATYAMITRA KEMAS LESTARI Tbk	400	11-Jul-22
55	SOFA-W	WARAN SERI I BOSTON FURNITURE INDUSTRIES Tbk	100	6-Jul-21
56	SOSS-W	WARAN SERI I SHIELD ON SERVICE Tbk	340	6-Nov-23
57	SOTS-W	WARAN SERI I SATRIA MEGA KENCANA Tbk	600	7-Dec-23
58	TAMA-W	WARAN SERI I LANCARTAMA SEJATI Tbk	288	10-Feb-23
59	TRAM-W	WARAN SERI II TRADA ALAM MINERA Tbk	155	16-Dec-20
60	TRIN-W	WARAN SERI I PERINTIS TRINITI PROPERTI Tbk	380	13-Jan-23
61	TRIS-W	WARAN SERI I TRISULA INTERNATIONAL Tbk	400	5-Dec-22
62	URBN-W	WARAN SERI I URBAN JAKARTA PROPERTINDO Tbk	2.5	10-Dec-21
63	VINS-W	WARAN SERI I VICTORIA INSURANCE Tbk	110	25-Sep-20
64	YELO-W	WARAN SERI I YELOOO INTEGRATA DATANET Tbk	500	29-Oct-21

Sumber: KSEI

### Head Office

UOB Plaza, Thamrin Nine Lt. 36  
 Jl. M.H. Thamrin Kav. 8-10  
 Jakarta 10230  
 Hunting : (62 - 21) 299 33 888  
 Hotline : (62 - 21) 299 33 999  
 Marketing : (62 - 21) 299 33 993  
 Fax : (62 - 21) 2300 238, 2300 317, 2300318, 31907608

### Pluit

Jl. Pluit Sakti Raya  
 No. 42A Blok E. No. 26  
 Pluit, Jakarta  
 Telp: (021) 6667 8420  
 Fax: (021) 6667 8423

### Kebun Jeruk

Komplek Ruko Prisma  
 Kedoya Plaza Blok D/24  
 Jl. Prisma Raya Kel. Kebon Jeruk  
 Kec. Kebon Jeruk, Jakarta Barat  
 Telp: (021) 5367 0580  
 Fax: (021) 5367 0709

### Kelapa Gading

The Grand Arteri Gading  
 Jl. Arteri Gading Blok E-1 No. 9 RT 9 RW 26  
 Kel. Pegangsaan Dua, Jakarta 14250  
 Telp: (021) 22458990  
 (021) 22458001

### Bandengan

Komplek Ruko Bandengan Megah  
 Jl. Bandengan Utara Kav. 81 Blok A1  
 Jakarta Utara  
 Telp: 021 - 66674959  
 Fax : 021 - 66674960

### Bandung

Jl. Buah Batu No. 92A  
 Bandung  
 Telp: 022 - 7331644  
 Fax : 022 - 733 1645

### Jambi

Jl. Raden Mattaher No. 15A  
 Pasar Jambi 36111  
 Telp: 0741 - 24180

### Surabaya

Graha Pacific Lantai 8  
 Jl. Basuki Rahmad No. 87-91  
 Surabaya 60271  
 Hunting: (031) 289 54 888  
 Hotline: (031) 289 54 889  
 Fax: (031) 5350 422

### Surabaya

Jl. Indragiri 12 - 18  
 Surabaya  
 Telp: 031 - 5621999  
 Fax : 031 - 5630331

### Surabaya

Universitas Narotama Surabaya  
 Jl. Arief Rachman Hakim 51  
 Surabaya 60117  
 Telp: 031 - 5927742  
 Fax : 031 - 5931213

### Semarang

Ruko Metro Plaza Blok B5  
 Jl. MT. Haryono 970 - Semarang Selatan  
 Semarang - Jawa Tengah  
 Telp:(024) 8600 1230  
 Hotline: (024) 864 59 699  
 Fax: (024) 354 2149

### Bali

Jl. Tukad Batanghari No. 44  
 Rukan No. 1 Denpasar  
 Telp: (0361) 472 3274  
 Fax: (0361) 472 3212

### Medan

Jl. Guru Patimpus No. 1-S  
 Kecamatan Medan Barat, Kelurahan Kesawan  
 Medan 20111  
 Hunting: (061) 4564 528  
 Fax: (061) 4564 529

### Puri Indah

Puri Indah Financial Tower  
 Jl. Puri Lkr. Dalam, Jl. Puri Indah Raya Blok T  
 No. 8 RT 1/RW 2, Kembangan Selatan -  
 Jakarta Barat  
 Telp : (021) 2258 7925

### Palembang

Kantor Perwakilan BEI  
 Jl. Angkatan 45, No. 13-14, RT0014/RW004,  
 Kel. Demang Lebar Daun, Kec. Ilir Barat I  
 Palembang  
 Telp: 0711-5734896  
 0711-5734378  
 0711-5649258

### Palembang

STIE Multi Data Palembang  
 Jl. Rajawali No. 14  
 Palembang 30113

### Solo

Jl. Dr. Cipto Mangunkusumo No. 9  
 Solo 57141  
 Telp: 0271 - 725079

### Surakarta

Universitas Islam Batik Surakarta  
 Jl. KH. Agus Salim No. 10  
 Kantor Perwakilan Bursa Efek Solo  
 Graha Prioritas Solo  
 Jl. Slamet Riyadi 302-304  
 Surakarta

### Pekalongan

Universitas Pekalongan  
 Jl. Sriwijaya No. 3  
 Pekalongan 51111

### Malang

STIE Asia Malang  
 Jl. Soekarno Hatta Rembuksari 1A  
 Malang  
 Telp: 0341 - 414828  
 Fax: 0341 - 414829

**Disclosures/Disclaimers**

This report is prepared by PT UOB Kay Hian Sekuritas ("PT UOBKH"), a licensed broker dealer registered in the Republic of Indonesia and a member of the Indonesia Stock Exchange ("IDX")

This report is provided for information only and is not an offer or a solicitation to deal in securities or to enter into any legal relations, nor an advice or a recommendation with respect to such securities.

**This report is prepared for general circulation.** It does not have regard to the specific investment objectives, financial situation and the particular needs of any recipient hereof. Advice should be sought from a financial adviser regarding the suitability of the investment product, taking into account the specific investment objectives, financial situation or particular needs of any person in receipt of the recommendation, before the person makes a commitment to purchase the investment product.

This report is confidential. This report may not be published, circulated, reproduced or distributed in whole or in part by any recipient of this report to any other person without the prior written consent of PT UOBKH. This report is not directed to or intended for distribution to or use by any person or any entity who is a citizen or resident of or located in any locality, state, country or any other jurisdiction as PT UOBKH may determine in its absolute discretion, where the distribution, publication, availability or use of this report would be contrary to applicable law or would subject PT UOBKH and its associates and its officers, employees and representatives to any registration, licensing or other requirements within such jurisdiction.

The information or views in the report ("Information") has been obtained or derived from sources believed by PT UOBKH to be reliable. However, PT UOBKH makes no representation as to the accuracy or completeness of such sources or the Information and PT UOBKH accepts no liability whatsoever for any loss or damage arising from the use of or reliance on the Information PT UOBKH and its associate may have issued other reports expressing views different from the Information and all views expressed in all reports of PT UOBKH and its connected persons are subject to change without notice. PT UOBKH reserves the right to act upon or use the Information at any time, including before its publication herein.

Except as otherwise indicated below, (1) PT UOBKH, its associates and its officers, employees and representatives may, to the extent permitted by law, transact with, perform or provide broking, underwriting, corporate finance-related or other services for or solicit business from, the subject corporation(s) referred to in this report; (2) PT UOBKH, its associate and its officers, employees and representatives may also, to the extent permitted by law, transact with, perform or provide broking or other services for or solicit business from, other persons in respect of dealings in the securities referred to in this report or other investments related thereto; (3) the officers, employees and representatives of PT UOBKH may also serve on the board of directors or in trustee positions with the subject corporation(s) referred to in this report. (All of the foregoing is hereafter referred to as the "Subject Business"); and (4) PT UOBKH may otherwise have an interest (including a proprietary interest) in the subject corporation(s) referred to in this report.

As of the date of this report, no analyst responsible for any of the content in this report has any proprietary position or material interest in the securities of the corporation(s) which are referred to in the content they respectively author or are otherwise responsible for.

**IMPORTANT DISCLOSURES FOR U.S. PERSONS**

This research report is prepared by PT UOBKH, a company authorized, as noted above, to engage in securities activities in Indonesia. PT UOBKH is not a registered broker-dealer in the United States and, therefore, is not subject to U.S. rules regarding the preparation of research reports and the independence of research analysts. This research report is provided for distribution by PT UOBKH (whether directly or through its US registered broker dealer affiliate named below) to "major U.S. institutional investors" in reliance on the exemption from registration provided by Rule 15a-6 of the U.S. Securities Exchange Act of 1934, as amended (the "Exchange Act"). All US persons that receive this document by way of distribution from or which they regard as being from PT UOBKH by their acceptance thereof represent and agree that they are a major institutional investor and understand the risks involved in executing transactions in securities.

Any U.S. recipient of this research report wishing to effect any transaction to buy or sell securities or related financial instruments based on the information provided in this research report should do so only through UOB Kay Hian (U.S.) Inc ("UOBKHUS"), a registered broker-dealer in the United States. Under no circumstances should any recipient of this research report effect any transaction to buy or sell securities or related financial instruments through PT UOBKH.

UOBKHUS accepts responsibility for the contents of this research report, subject to the terms set out below, to the extent that it is delivered to and intended to be received by a U.S. person other than a major U.S. institutional investor.

The analyst whose name appears in this research report is not registered or qualified as a research analyst with the Financial Industry Regulatory Authority ("FINRA") and may not be an associated person of UOBKHUS and, therefore, may not be subject to applicable restrictions under FINRA Rules on communications with a subject company, public appearances and trading securities held by a research analyst account.

## Analyst Certification/Regulation AC

Each research analyst of PT UOBKH who produced this report hereby certifies that (1) the views expressed in this report accurately reflect his/her personal views about all of the subject corporation(s) and securities in this report; (2) the report was produced independently by him/her; (3) he/she does not carry out, whether for himself/herself or on behalf of PT UOBKH or any other person, any of the Subject Business involving any of the subject corporation(s) or securities referred to in this report; and (4) he/she has not received and will not receive any compensation that is directly or indirectly related or linked to the recommendations or views expressed in this report or to any sales, trading, dealing or corporate finance advisory services or transaction in respect of the securities in this report. However, the compensation received by each such research analyst is based upon various factors, including PT UOBKH total revenues, a portion of which are generated from PT UOBKH business of dealing in securities.

Reports are distributed in the respective countries by the respective entities and are subject to the additional restrictions listed in the following table.

General	This report is not intended for distribution, publication to or use by any person or entity who is a citizen or resident of or located in any country or jurisdiction where the distribution, publication or use of this report would be contrary to applicable law or regulation.
Hong Kong	This report is distributed in Hong Kong by UOB Kay Hian (Hong Kong) Limited ("UOBKHHK"), which is regulated by the Securities and Futures Commission of Hong Kong. Neither the analyst(s) preparing this report nor his associate, has trading and financial interest and relevant relationship specified under Para. 16.4 of Code of Conduct in the listed corporation covered in this report. UOBKHHK does not have financial interests and business relationship specified under Para. 16.5 of Code of Conduct with the listed corporation covered in this report. Where the report is distributed in Hong Kong and contains research analyses or reports from a foreign research house, please note: (i) recipients of the analyses or reports are to contact UOBKHHK (and not the relevant foreign research house) in Hong Kong in respect of any matters arising from, or in connection with, the analysis or report; and (ii) to the extent that the analyses or reports are delivered to and intended to be received by any person in Hong Kong who is not a professional investor, or institutional investor, UOBKHHK accepts legal responsibility for the contents of the analyses or reports only to the extent required by law.
Indonesia	This report is distributed in Indonesia by PT UOB Kay Hian Sekuritas, which is regulated by Financial Services Authority of Indonesia ("OJK"). Where the report is distributed in Indonesia and contains research analyses or reports from a foreign research house, please note recipients of the analyses or reports are to contact PT UOBKH (and not the relevant foreign research house) in Indonesia in respect of any matters arising from, or in connection with, the analysis or report.
Malaysia	Where the report is distributed in Malaysia and contains research analyses or reports from a foreign research house, the recipients of the analyses or reports are to contact UOBKHM (and not the relevant foreign research house) in Malaysia, at +603-21471988, in respect of any matters arising from, or in connection with, the analysis or report as UOBKHM is the registered person under CMSA to distribute any research analyses in Malaysia.
Singapore	This report is distributed in Singapore by UOB Kay Hian Private Limited ("UOBKH"), which is a holder of a capital markets services licence and an exempt financial adviser regulated by the Monetary Authority of Singapore. Where the report is distributed in Singapore and contains research analyses or reports from a foreign research house, please note: (i) recipients of the analyses or reports are to contact UOBKH (and not the relevant foreign research house) in Singapore in respect of any matters arising from, or in connection with, the analysis or report; and (ii) to the extent that the analyses or reports are delivered to and intended to be received by any person in Singapore who is not an accredited investor, expert investor or institutional investor, UOBKH accepts legal responsibility for the contents of the analyses or reports only to the extent required by law.
Thailand	This report is distributed in Thailand by UOB Kay Hian Securities (Thailand) Public Company Limited, which is regulated by the Securities and Exchange Commission of Thailand.
United Kingdom	This report is being distributed in the UK by UOB Kay Hian (U.K.) Limited, which is an authorised person in the meaning of the Financial Services and Markets Act and is regulated by The Financial Conduct Authority. Research distributed in the UK is intended only for institutional clients.
United States of America ('U.S.')	This report cannot be distributed into the U.S. or to any U.S. person or entity except in compliance with applicable U.S. laws and regulations. It is being distributed in the U.S. by UOB Kay Hian (US) Inc, which accepts responsibility for its contents. Any U.S. person or entity receiving this report and wishing to effect transactions in any securities referred to in the report should contact UOB Kay Hian (US) Inc. directly.

Copyright 2020, PT UOB Kay Hian Sekuritas. All rights reserved.

<http://research.uobkayhian.com>